



p130 Cas Polyclonal Antibody

Catalog No	YP-Ab-04053
Isotype	IgG
Reactivity	Human;Mouse;Rat
Applications	WB;IHC;IF;ELISA
Gene Name	BCAR1
Protein Name	Breast cancer anti-estrogen resistance protein 1
Immunogen	The antiserum was produced against synthesized peptide derived from human p130 Cas. AA range:376-425
Specificity	p130 Cas Polyclonal Antibody detects endogenous levels of p130 Cas protein.
Formulation	Liquid in PBS containing 50% glycerol, 0.5% BSA and 0.02% sodium azide.
Source	Polyclonal, Rabbit,IgG
Purification	The antibody was affinity-purified from rabbit antiserum by affinity-chromatography using epitope-specific immunogen.
Dilution	WB: 1/500 - 1/2000. IHC: 1/100 - 1/300. ELISA: 1/5000.. IF 1:50-200
Concentration	1 mg/ml
Purity	≥90%
Storage Stability	-20°C/1 year
Synonyms	BCAR1; CAS; CASS1; CRKAS; Breast cancer anti-estrogen resistance protein 1; CRK-associated substrate; Cas scaffolding protein family member 1; p130cas
Observed Band	130kD
Cell Pathway	Cell junction, focal adhesion . Cytoplasm . Cell projection, axon . Unphosphorylated form localizes in the cytoplasm (By similarity). Localizes to focal adhesion sites following integrin engagement (By similarity). .
Tissue Specificity	Widely expressed with an abundant expression in the testis. Low level of expression seen in the liver, thymus, and peripheral blood leukocytes. The protein has been detected in a B-cell line.
Function	domain:A serine-rich region promotes activation of the serum response element (SRE).,domain:Contains a central domain (substrate domain) containing multiple potential SH2-binding sites and a C-terminal domain containing a divergent helix-loop-helix (HLH) motif. The SH2-binding sites putatively bind CRK, NCK and ABL SH2 domains. The HLH motif is absolutely required for the induction of pseudohyphal growth in yeast and mediates heterodimerization with CASL.,domain:The SH3 domain is necessary for the localization of the protein to focal adhesions and interacts with one proline-rich region of focal adhesion kinase 1.,function:Docking protein which plays a central coordinating role for tyrosine-kinase-based signaling related to cell adhesion. Implicated in induction of cell migration. Overexpression confers antiestrogen resistance on breast cancer cells.,PTM:Focal adhesion kinase 1 phosphoryl



Background

BCAR1, or CAS, is an Src (MIM 190090) family kinase substrate involved in various cellular events, including migration, survival, transformation, and invasion (Sawada et al., 2006 [PubMed 17129785]).[supplied by OMIM, May 2009],

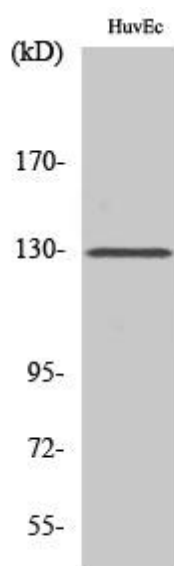
matters needing attention

Avoid repeated freezing and thawing!

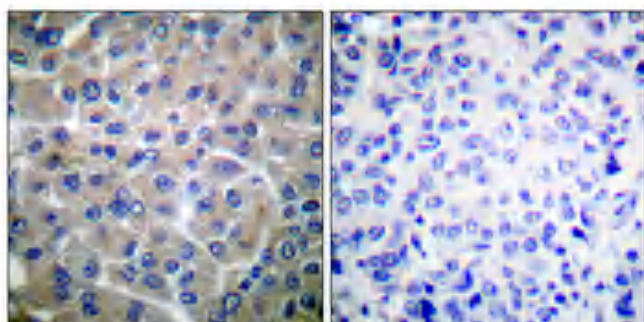
Usage suggestions

This product can be used in immunological reaction related experiments. For more information, please consult technical personnel.

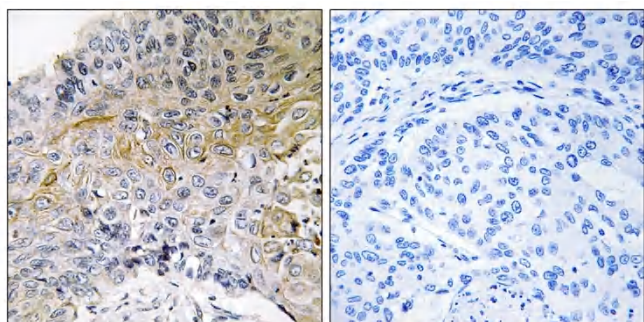
Products Images



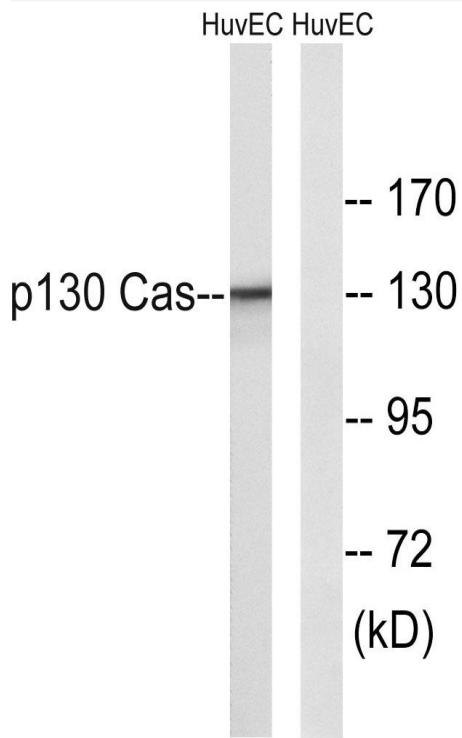
Western Blot analysis of various cells using p130 Cas Polyclonal Antibody



Immunohistochemical analysis of paraffin-embedded Human breast cancer. Antibody was diluted at 1:100(4° overnight). High-pressure and temperature Tris-EDTA,pH8.0 was used for antigen retrieval. Negative contrl (right) obtained from antibody was pre-absorbed by immunogen peptide.



Immunohistochemistry analysis of paraffin-embedded human breast carcinoma tissue, using p130 Cas Antibody. The picture on the right is blocked with the synthesized peptide.



Western blot analysis of lysates from HUVEC cells, using p130 Cas Antibody. The lane on the right is blocked with the synthesized peptide.